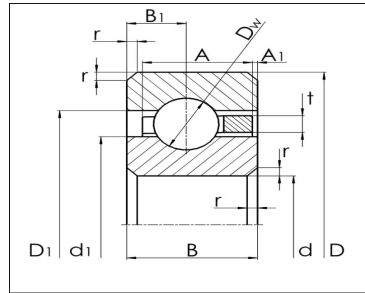


Thin section deep groove ball bearings



Seleccione	Consulta	Designacion	D	D	d1	D1	r	B	B1	Dw	t	AA1
CSCA020	50.8mm	63.5 mm	55.5 mm	58.8 mm	0.6	6.35	2.67	3.175	1.1	5.1	0.6	
CSCA025	63.5 mm	76.2 mm	68.2 mm	71.5 mm	0.6	6.35	2.67	3.175	1.1	5.1	0.7	
CSCA030	76.2 mm	88.9 mm	80.9 mm	84.2 mm	0.6	6.35	2.67	3.175	1.1	5.1	0.7	
CSCA035	88.9 mm	101.6 mm	93.6 mm	96.9 mm	0.6	6.349	2.67	3.175	1.1	5.1	0.7	
CSCA040	101.6 mm	114.3 mm	106.3 mm	109.6 mm	0.6	6.35	2.67	3.175	51	5.1	0.7	
CSCA042	107.95 mm	120.65 mm	112.6 mm	115.9 mm	0.6	6.35	2.67	3.175	54	5.1	0.7	
CSCA045	114.3 mm	127 mm	119 mm	122.3 mm	0.6	6.35	2.67	3.175	57	5.1	0.7	
CSCA047	120.65 mm	133.35 mm	125.3 mm	128.6 mm	0.6	6.349	2.67	3.175	60	5.1	0.7	
CSCA050	127 mm	139.7 mm	131.7 mm	135 mm	0.6	6.349	2.67	3.175	63	5.1	0.7	
CSCA055	139.7 mm	152.4 mm	144.4 mm	147.7 mm	0.6	6.35	2.67	3.175	69	5.1	0.7	
CSCA060	152.4 mm	165.1 mm	157.1 mm	160.4 mm	0.6	6.349	2.67	3.175	75	5.1	0.7	
CSCA065	165.1 mm	177.8 mm	169.8 mm	173.1 mm	0.6	6.35	2.67	3.175	81	5.1	0.7	
CSCA070	177.8 mm	190.5 mm	182.5 mm	185.8 mm	0.6	6.349	2.67	3.175	87	5.1	0.7	
CSCA075	190.5 mm	203.2 mm	195.2 mm	198.5 mm	0.6	6.349	2.67	3.175	93	5.1	0.7	
CSCA080	203.2 mm	215.9 mm	207.9 mm	211.2 mm	0.6	6.35	2.67	3.175	99	5.1	0.7	

Thin section deep groove ball bearings

CSCA090	228.6 mm	241.3 mm	233.3 mm	236.6 mm	0.6	6.35	2.67	3.175	111	5.1	0.7
CSCA100	254 mm	266.7 mm	258.7 mm	262 mm	0.6	6.349	2.67	3.175	123	5.1	0.7
CSCA120	304.8 mm	317.5 mm	309.5 mm	312.8 mm	0.6	6.349	2.67	3.175	147	5.1	0.7
CSCAA010TN	25.4mm	34.925 mm	29 mm	31.4 mm	0.38	4.762	2	2.381	0.8	3.5	0.6
CSCAA015TN	38.1mm	47.625 mm	41.7 mm	44.1 mm	0.38	4.762	2	2.381	0.8	3.5	0.7
CSCAA017TN	44.45 mm	53.975 mm	48 mm	50.4 mm	0.38	4.762	2	2.381	0.8	3.5	0.6
CSCB020	50 mm	66.675 mm	56.7 mm	60.8 mm	1	7.937	3.43	3.969	23	6.4	0.7
CSCB025	63.5 mm	79.375 mm	69.4 mm	73.5 mm	1	7.937	3.43	3.969	28	6.4	0.8
CSCB030	76.2 mm	92.075 mm	82.1 mm	86.2 mm	1	7.937	3.43	3.969	33	6.4	0.8
CSCB035	88.9 mm	104.775 mm	94.8 mm	98.9 mm	1	7.937	3.43	3.969	38	6.4	0.8
CSCB040	101.6 mm	117.475 mm	107.5 mm	111.6 mm	1	7.937	3.43	3.969	43	6.4	0.8
CSCB042	107.95 mm	123.825 mm	113.8 mm	117.9 mm	1	7.937	3.43	3.969	45	6.4	0.8
CSCB045	114.3 mm	130.175 mm	120.2 mm	124.3 mm	1	7.937	3.43	3.969	48	6.4	0.8
CSCB050	127 mm	142.875 mm	132.9 mm	137 mm	1	7.937	3.43	3.969	53	6.4	0.8
CSCB060	152.4 mm	168.275 mm	158.3 mm	162.4 mm	1	7.937	3.43	3.969	63	6.4	0.8